

Thank you all for entering our trial. We look forward to making this an annual opportunity for the foot handler. This will be a learning experience for both clubs and we will take this opportunity to learn how to make this event even better next year.

Now on with some of the technical info:

Some of the judging assignments have changed. Please check your stake for judging assignments.

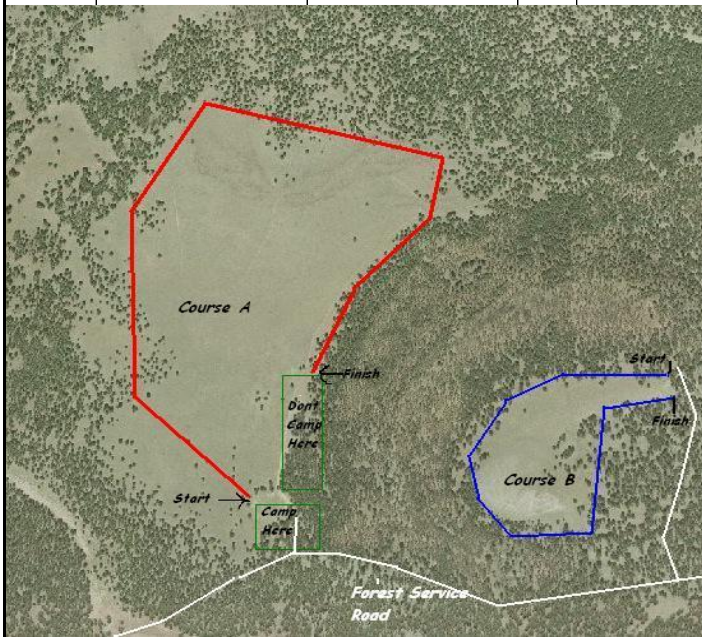
Braces will be announced by bullhorn with a 15 minute lead time.
It is your responsibility to get to the line on time. YOU WILL BE SCRATCHED IF YOU ARE LATE!!

Water will be available only for judges' and volunteers' horses - not for gallery or scout horses.
Please bring enough water for yourself, your dog, and your horse.

There will be a movie night both Friday and Saturday night. All are welcome to join us.
Food will only be provided for judges and volunteers.

There will be a dog wagon for the puppy course. Please bring your own crate if possible.

The camping area has been limited to accommodate the gundog course.
Please refer to map for the general camping area.



OPEN LIMITED GUNDOG
JUDGES: BLAIR HOLZER AND RICK PETERSEN

COURSE A; STARTS 7 AM FRIDAY

| BRACE | CALL NAME | BREED | SEX | HANDLER |
|--------------|------------------|----------------|------------|--------------------------|
| 1A | DENI | BRITTANY | F | JULIE OR MARTIN MARESH |
| 1B | MASON | VIZSLA | M | TOM OR CINDY PESCOD |
| 2A | TESS | GSP | F | CATHY REIFSCHNEIDER |
| 2B | HANNAH | BRITTANY | F | BILL WHITE |
| 3A | BUCK | BRITTANY | M | FRANK WAID |
| 3B | GUS | VIZSLA | M | TOM OR CINDY PESCOD |
| 4A | JACK | VIZSLA | M | WARREN EIZMAN |
| 4B | JAKE | GSP | M | STEVE LAMBACH/GARY GUYRO |
| 5A | FLYBY | ENGLISH SETTER | F | DON HUMES |
| 5B | CHERRY | GSP | F | TIM KULISH |

OPEN GUNDOG

JUDGES: BLAIR HOLZER AND CHAD CONNOR

COURSE A; FOLLOWS OPEN LIMITED ON FRIDAY

| BRACE | CALL NAME | BREED | SEX | HANDLER |
|--------------|------------------|----------------|------------|--------------------------------|
| 1A | BE | BRITTANY | F | KEVIN ROGERS |
| 1B | RIATA | VIZSLA | F | RICARDO RENTERIA |
| 2A | TAZ | VIZSLA | M | BURNIE STOKES |
| 2B | SPRING | GSP | F | DON GYDE |
| 3A | PATCHES | GSP | F | CHET SOBERAY |
| 3B | HANNAH | BRITTANY | F | BILL WHITE |
| 4A | MAC | BRITTANY | M | TONY DE GREGORIO |
| 4B | COWBOY | GSP | M | ED RUCKER |
| 5A | TAOS | VIZSLA | M | RICARDO RENTERIA/MARIA ZUCCONI |
| 5B | BODIE | GSP | M | DENNIS BOWDEN |
| 6A | TRAMP | BRITTANY | M | KEVIN ROGERS |
| 6B | GUS | VIZSLA | M | TOM OR CINDY PESCOD |
| 7A | JACK | VIZSLA | M | WARREN EIZMAN |
| 7B | BOOMER | BRITTANY | M | TONY DE GREGORIO |
| 8A | JAKE | GSP | M | STEVE LAMBACH/GARY GUYRO |
| 8B | TESS | GSP | F | CATHY REIFSCHNEIDER |
| 9A | CHERRY | GSP | F | TIM KULISH |
| 9B | FLYBY | ENGLISH SETTER | F | DON HUMES |

AMATEUR GUNDOG

JUDGES: BLAIR HOLZER AND LYLE CHRISTIANSEN

COURSE A; FOLLOWS OPEN GUNDOG

| BRACE | CALL NAME | BREED | SEX | HANDLER |
|--------------|------------------|----------------|------------|--------------------------------|
| 1A | HANNAH | BRITTANY | F | BILL WHITE |
| 1B | TALON | BRITTANY | F | JULIE OR MARTIN MARESH |
| 2A | PATCHES | GSP | F | CHET SOBERAY |
| 2B | CC | GSP | F | JACK FALEY |
| 3A | MORGAN | GSP | M | TINA LOUIE |
| 3B | JOJO | GSP | F | DOUG SCHERBARTH |
| 4A | TRAMP | BRITTANY | M | KEVIN ROGERS |
| 4B | TINA | BRITTANY | F | TONY DE GREGORIO |
| 5A | GUS | VIZSLA | M | TOM OR CINDY PESCOD |
| 5B | TAOS | VIZSLA | M | RICARDO RENTERIA/MARIA ZUCCONI |
| 6A | JAKE | GSP | M | STEVE LAMBACH/GARY GUYRO |
| 6B | REVENGE | GSP | M | PHIL CASDORPH |
| 7A | COWBOY | GSP | M | ED RUCKER |
| 7B | BODIE | GSP | M | DENNIS BOWDEN |
| 8A | RIATA | VIZSLA | F | RICARDO RENTERIA |
| 8B | LUKE | GSP | M | TODD YAMMAMOTO |
| 9A | FLYBY | ENGLISH SETTER | F | BILL WHITE |
| 9B | BE | BRITTANY | F | KEVIN ROGERS |
| 10A | CHERRY | GSP | F | TIM KULISH |
| 10B | SUZY Q | BRITTANY | F | JESSE SMITH |

AMATEUR LIMITED GUNDOG
JUDGES: TOM WORKMAN AND RICK PETERSEN

COURSE A; FOLLOWS AMATEUR GUNDOG ON SATURDAY

| BRACE | CALL NAME | BREED | SEX | HANDLER |
|--------------|------------------|----------------|------------|--------------------------|
| 1A | MASON | VIZSLA | M | TOM OR CINDY PESCOD |
| 1B | TAZ | VIZSLA | M | BURNIE STOKES |
| 2A | THUNDER | GSP | M | BLAIR OR JEAN HOLZER |
| 2B | HANNAH | BRITTANY | F | BILL WHITE |
| 3A | POKER | BRITTANY | M | JULIE OR MARTIN MARESH |
| 3B | CHARLEY | BRITTANY | F | GUY SHELANDER |
| 4A | JAKE | GSP | M | STEVE LAMBACH/GARY GUYRO |
| 4B | REBEL | BRITTANY | M | CHAD CONNOR |
| 5A | GUS | VIZSLA | M | TOM OR CINDY PESCOD |
| 5B | BUCK | BRITTANY | M | FRANK WAID |
| 6A | DENI | BRITTANY | F | JULIE OR MARTIN MARESH |
| 6B | FLYBY | ENGLISH SETTER | F | TIM KULISH |

AMATEUR PUPPY

JUDGES: TOM WORKMAN AND GREGG GIBBONS

COURSE B; STARTS 8:30 AM ON FRIDAY

| BRACE | CALL NAME | BREED | SEX | HANDLER |
|--------------|------------------|----------------|------------|-----------------|
| 1A | DOVER | BRITTANY | M | CHAD CONNOR |
| 1B | SPOT | GSP | M | DOUG SCHERBARTH |
| 2A | DARLINGTON | BRITTANY | F | CHAD CONNOR |
| 2B | NELLIE | GSP | F | JACK FALEY |
| 3A | SOLO | GSP | M | BILL SOMMERS |
| 3B | LIL BIT | GSP | F | LUIS CHAVEZ |
| 4A | JACK | BRITTANY | M | GUY SHELANDER |
| 4B | MAYDAY | ENGLISH SETTER | F | TINA LOUIE |

OPEN PUPPY

JUDGES: TOM WORKMAN AND GREGG GIBBONS

COURSE B; STARTS 7 AM ON SATURDAY

| BRACE | CALL NAME | BREED | SEX | HANDLER |
|--------------|------------------|----------------|------------|----------------|
| 1A | ELLA | GSP | F | TODD YAMMAMOTO |
| 1B | DARLINGTON | BRITTANY | F | CHAD CONNOR |
| 2A | POGI | GSP | M | TODD YAMMAMOTO |
| 2B | DOVER | BRITTANY | M | CHAD CONNOR |
| 3A | LIL BIT | GSP | F | LUIS CHAVEZ |
| 3B | SOLO | GSP | M | BILL SOMMERS |
| 4A | MAYDAY | ENGLISH SETTER | F | DON HUMES |
| 4B | NELLIE | GSP | F | JACK FALEY |
| 5A | DIVA | GSP | F | BOB WALKER |

OPEN DERBY

JUDGES: CATHY REIFSCHNEIDER AND LYLE CHRISTIANSEN

COURSE B; STARTS AFTER OPEN PUPPY ON SATURDAY

| BRACE | CALL NAME | BREED | SEX | HANDLER |
|--------------|------------------|----------------|------------|--------------------------------|
| 1A | TEEJAY | GSP | F | BLAIR OR JEAN HOLZER |
| 1B | LILLY | GSP | F | RICK PETERSEN |
| 2A | MADDIE | GSP | F | RICK PETERSEN |
| 2B | NASH | BRITTANY | M | TONY DE GREGORIO |
| 3A | TWIX | VIZSLA | F | E. WARREN EIZMAN |
| 3B | ROXY | BRITTANY | F | JESSE SMITH |
| 4A | MACHI | GSP | F | TINA LOUIE |
| 4B | MAYDAY | ENGLISH SETTER | F | DON HUMES |
| 5A | PAYASO | VIZSLA | M | RICARDO RENTERIA/MARIA ZUCCONI |
| 5B | G-MAN | VIZSLA | M | MELISSA THOMAS/CINDY PESCOD |
| 6A | ROCCO | VIZSLA | M | WARREN EIZMAN |
| 6B | DIVA | GSP | F | BOB WALKER |
| 7A | ZEEK | GSP | M | MIKE GEORGE |